

BALLAST POINT BREWING CO

* Main production beer

UPDATED: 9/7/19

4oz. TASTERS: \$2.50-\$3 -OR- FLIGHT: \$9-\$10

4oz. 8oz. 16oz.

M – Main Bar U – Upper Patio P – Patio Bar

CRISP & BRIGHT

MUP Saloon Lager | 5.2% | 16 oz. \$7.50
A pre-prohibition style lager rested in High West bourbon barrel
MUP Wahoo White * | 4.5% | 16 oz. \$6.50
Witbier style, unfiltered with orange peel and coriander

MUP BP Lager * | 4.2% | 16 oz. \$6.50
Crisp refreshing 99 calorie Lager

MUP California Kolsch * | 5.2% | 16 oz. \$6.50
A light Kolsch style pale ale crafted with aromatic German hops and rounded out with a blend of American and Munich malts

M Pride 2019 Collaboration Brew 4.5% | 16 oz. \$7.50
We teamed up with our friends at Hillcrest Brewing Company to brew a refreshing cucumber lager in solidarity with the LGBTQ community and National Pride Month

MUP Bonito Blonde * | 4.5% | 16 oz. \$6.50
Blonde Ale, golden in color and soft malt character with subtle hints of hops

MUP Longfin Lager * | 4.5% | 16 oz. \$6.50
A solidly balanced Helles inspired Lager with a clean, slightly hoppy finish that could easily fit in at any German beer garden

HOPS & MORE HOPS

MUP Sculpin IPA* | 7% | 16 oz. \$7.50
Bright floral hop flavors of apricot, mango and lemon

MUP Manta Ray * | 8.5% | 8 oz. \$5.50
2017 GABF Gold Medal Winner (Imperial India Pale Ale)
Double IPA with an aroma of tangerine and pine

MUP Fathom IPA * | 6% | 16 oz. \$6.50
Crisp, clean brew with a touch of malt and zesty orange & piney hops

MUP Grunion Pale Ale * | 5.5% | 16 oz. \$7.50
Our Mosaic hop American Pale Ale, won GABF gold 2014.

M Big Eye IPA * | 7% | 16 oz. \$7.50
Bitter hoppy flavor, with a solid malt black finish

LOCAL CRAFT (Not available in flights or growler fills)

MUP Thunder King Cold Brew Coffee | 12 oz. Bottle \$6
Organic black coffee from Costa Mesa, CA

M Blood Orange Sake | 8% | 6 oz. \$9
Blood orange puree and zest with Chinook hops and then bottle conditioned to pour bright and bubbly. From our friends at Setting Sun Sake.

M Apple Soiree (GF) | 6.5% | 16 oz. \$8
Apple forward semi-sweet cider from Newtopia Cyder, off-dry

MUP Wyld Cyder (GF) | 5.8% | 16 oz. Can \$8
An off-dry funky, earthy sweet and sour cider made with marionberry from Newtopia Cidery

ROOTS TO BOOTS

Our Research & Development Program gives all employees a chance to experiment with unique ingredients and styles. If they're popular, they may become a new beer—so vote with your glass!

MUP R&D Witbier | 4.5% | 16 oz. \$7.50
Belgian-style ale, with a smooth mouthfeel, and an unfiltered appearance

UP Agave Blonde | 5.4% | 16 oz. \$7.50
A clean, malty blonde ale with a dry crisp finish.

M La Calima 6.5% | 16 oz. \$7.50
Over four pounds per barrel of Citra and Cashmere hops help with the haze development while adding berry, citrusy flavors and a touch of “dankness” in the finish.

UP Hop Soda 4.3% | 16 oz. \$7.50
Incredibly pale and brilliantly clear, dry and thirst-quenching brut session India pale lager with bursts of Mosaic, Cashmere and Galaxy hops

UP Sun Don't Shine 8.3% | 8 oz. \$5.50
Intensely malty with powerful chocolate and coffee notes

M+ Six Four Impala 6.4% | 16 oz. \$7.50
Dark amber with caramel sweetness balanced with roasted malt and citrus hop bitterness

FRUIT & SPICE

MUP Watermelon Dorado | 10% | 8 oz. \$6.50
Our hoppy double IPA with watermelon

MUP Grapefruit Sculpin IPA * | 7% | 16 oz. \$7.50
Our signature IPA gets a zesty grapefruit punch

MUP Pineapple Sculpin IPA * | 7% | 16 oz. \$7.50
Our signature IPA with smooth additions of pineapple

MUP Habanero Sculpin IPA | 7% | 16 oz. \$7.50
Bright fruit notes and hoppy bite of our Sculpin IPA with the citrusy, floral heat of habaneros

M Easy Seas | 10% | 8 oz. \$5.50
Our mimosa-inspired creation is the ultimate compliment to brunch

RICH & MALTY

M Mocha Marlin Porter 6% | 16 oz. \$7.50
Coffee and chocolate come together in this brew

MUP Victory at Sea | 10% | 8 oz. \$5.50
Imperial Porter with coffee and vanilla

MUP California Amber * | 5.5% | 16 oz. \$6.50
American Amber inspired by the original Copper ESB

MUP Peanut Butter Victory at Sea | 10% | 8 oz. \$5.50
Imperial Porter with coffee, vanilla and peanut butter

M Black Marlin Porter * | 6% | 16 oz. \$6.50
2018 World Beer Cup Bronze Medal Winner (Robust Porter)
Smooth chocolate and caramel with a hoppy finish

U Reef Rye Brown Ale 5.6% | 16 oz. \$7.50
Brown Ale with coriander, 33% rye malt give the beer an assertive rye taste with a dry finish

BARREL AGED

Aging the beer in barrels takes the experience to the next level, unlocking new flavors in our award winning beers.

M+ High West BA Victory at Sea | 12% | 4 oz. \$5.50
Aromatic vanilla, sweet bourbon flavor and roasted coffee undertones

M Trade St. Blend #7 | 10% | 4 oz. \$5.50 | 8 oz. \$10
Smooth caramel and roasted chocolate notes from our barrel aging gurus.

M BBA Brett Raspberry Sour Wench | 8% | 4 oz. \$5.50 | 8 oz. \$10
Our crowd favorite Sour Wench fermented with Brett and barrel aged in bourbon barrels.

M Red Wine BA Sour Wench | 7.1% | 8 oz. \$8.50
Sour Wench aged in red wine barrels

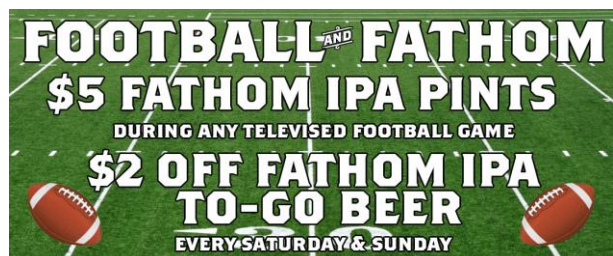
WILD ALES & SOURS

Featuring one off beers from our Long Beach and Miramar locations. Check out our Flight Bar for more selections!

M Citrus Cove | 4.2% | 16 oz. \$7.50
Our Citrus Cove captures the salty spray of an ocean wind mingled with a bright zesty character that begs one pleasing sip after the other.

M Blonde Foeder | 5.4% | 16oz \$7.50
Both the aroma and flavor give lots of stone and tropical fruits abound with a slight amount of funk. Aged 8 months

UP Oud Brunish | 7% | 16 oz. \$7.50
A complex, sour, red wine-like Belgian-style ale. Notes of black cherries and plum with some vanilla and balanced acidity and complementary malt flavors..



WHITE WINE

Ruffino Moscato | Italy | \$11 Glass | \$44 Bottle
Kung Fu Girl Riesling | Washington State | \$11 Glass | \$44 Bottle
Blindfold White Blend | Napa Valley, CA | \$13 Glass | \$50 Bottle
Ruffino IL Ducale Pinot Grigio | Friuli, Italy | \$11 Glass | \$44 Bottle
Kim Crawford Sauv. Blanc | New Zealand | \$11 Glass | \$44 Bottle
Simi Chardonnay | Sonoma County, CA | \$10 Glass | \$40 Bottle

SPARKLING WINE

Mumms Napa Brut | Napa, CA | \$10 187ml
Ruffino Prosecco | Italy | \$10 - 187ml | \$48 - 750ml

RED WINE

Meiomi Pinot Noir | Central Coast, CA | \$12 Glass | \$48 Bottle
Paso Creek Cabernet Sauv. | Paso Robles, CA | \$15 Glass | \$60 Bottle
Spoken Barrel Meritage Red | Washington | \$13 Glass | \$50 Bottle
7 Moons Red Blend | Sonoma County, CA | \$11 Glass | \$44 Bottle
The Prisoner Red Blend | Napa Valley, CA | \$20 Glass | \$80 Bottle
The Velvet Devil Merlot | Washington State | \$11 Glass | \$44 Bottle

ROSE WINE

Band of Rosé | Washington State | \$11 Glass | \$44 Bottle
Chapoutier Belleruche Rosé | France | \$12 Glass | \$48 Bottle